

# PROOF #2

FIRST THREE PROOFS ARE INCLUDED WITH ORDER.  
EACH ADDITIONAL PROOF REVISION IS AN ADDITIONAL \$10.

Order/Estimate #20107

Customer: GRI

Project Lead: Shelly

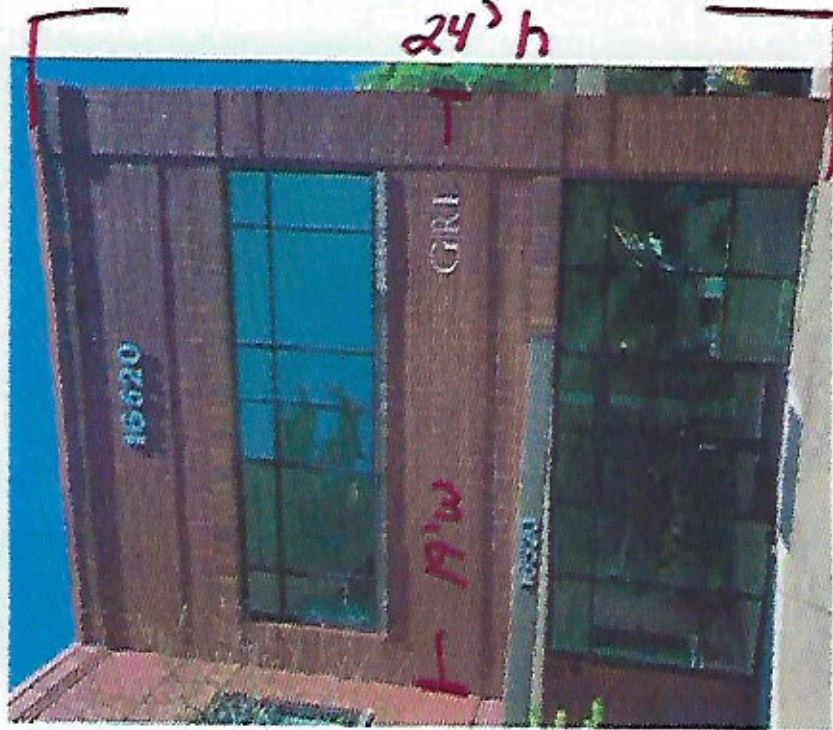
# FAST SIGNS.

Make Your Statement™

12176 SW Garden Place  
Tigard, OR 97223  
503.244.8813

314@fastsigns.com

PROJECT SIZE: 20" H x 40.2" W



GRI

(Qty: 1)

GRI: 14.2" Cap Height

Lines: 20" Hx.4"W

Stud Mounted 2" Studs

Weight under 200 per Letter

Specs: 48"H

PLEASE ZOOM INTO GR

MATERIAL(S):

, Material 3/8" brushed silver aluminum

ADDITIONAL NOTES: Stud mounted

DATE: 8.25.22

APPROVAL:

Proofed By: SV

PLEASE NOTE: Proofs of this order will not be used for signs unless approved.

Should you require a specific color please specify a Pantone color (PMS) or color by our name and choose a matching color from our color palette.

THIS SIGN AND ITS INSTALLATION IS LIMITED TO THE ORIGINAL USE AND LOCATION. ANY REMOVAL, RELOCATION, OR REUSE OF THIS SIGN OR ANY OTHER BE-NEEDED IS PROHIBITED AND SUBJECT TO DEMAND FOR USE CHARGE.

**PROOFING POLICY: FINAL EXAMINATION OF YOUR PROOF IS YOUR RESPONSIBILITY.**

FASTSIGNS TIGARD WILL NOT BE RESPONSIBLE FOR ANY ERRORS THAT COULD HAVE BEEN PREVENTED BY THE PROPER REVIEW OF YOUR PROOF.

